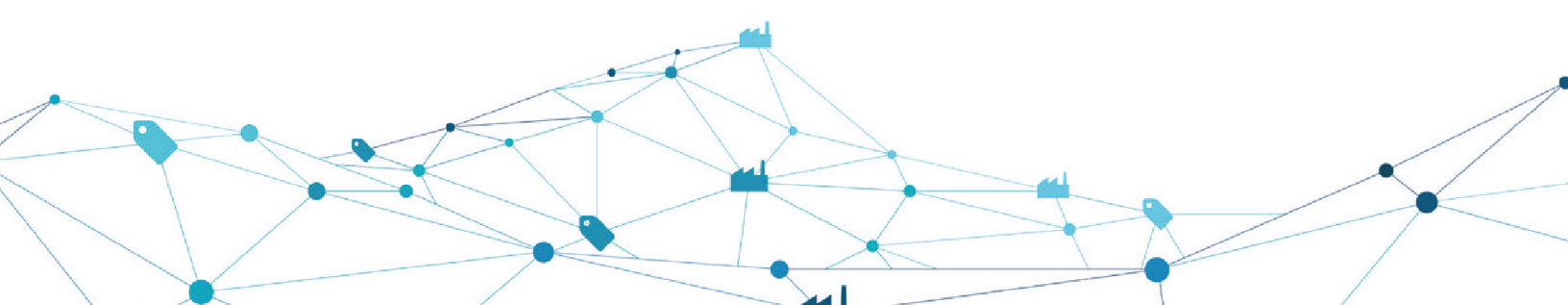


Chemical Inventory Template Guide

The foundation of CleanChain is your chemical inventory data which is used to determine your company's compliance and conformance levels against different MRSLs. This guide is meant to help you quickly define the items you will need, and provide examples so you can successfully submit your chemical inventory into CleanChain.

SHEET 1: CHEMICAL INVENTORY

Version:	This will be populated with the current version of the chemical inventory file template in use. Eg: Version 1
Company Name	Provide the name of your organization Eg: Sustainable Textiles
Contact Person	Provide the contact's name for inventory related questions Eg: John Smith
Title	Provide the title of the contact Eg: Chemicals Manager
Email	Provide the email of the contact Eg: john.smith@sunlao.com
Reporting Period	Provide the time period of your chemical inventory Eg: August 2017 to September 19 - 17



Chemical formulation (English)	Chemical formulator (English)	Chemical formulator type	ZDHC use category	Amount onsite	Amount onsite (unit)	Monthly usage
Eg: SERAGAL C-FTRH	Eg: Dystar Colors Distribution GmbH	Eg: Original manufacturer/ formulator	Eg: 1.2.9 Enzymes	Eg: 2,000	Eg: kg	Eg: 150

1. **Chemical Formulation (English)** – the chemical product, ready for use.

2. **Chemical Formulator (English)** – who produced the formulation.

3. **Chemical Formulator type**

USE DROP DOWN TO SELECT:

Original Formulator – An entity who manufactured the original chemical formulation.

Re-formulator – An entity who has taken an original formulation produced by a manufacturer and explicitly altered the chemistry and re-named the formulation.

Broker – An entity who buys chemical formulations in bulk and has salespeople (agents) sell the formulations under the broker's name. A broken does not manufacture formulations.

Agent – An entity who sells chemical formulations on behalf of a broker.

Distributor – An entity who packages and delivers chemical formulations. A distributor does not manufacture formulations.

Other – Another type of entity not covered by any of the other options.

4. **ZDHC Use Category**

USE DROP DOWN TO SELECT:

Please provide the ZDHC use category for the chemical formulation. This is a drop-down menu, choose the option that best matches how you use the chemical formulation.

5. **Amount Onsite** – total amount of the chemical formulation in your facility. This is usually accomplished through a stock take. If your reporting period is August 2017, then your "amount onsite" value should be recorded sometime during the month of August. If you only take inventory once or twice a year, then this value could be a monthly average.

6. **Amount Onsite (unit)** – unit of measure for the chemical formulation onsite at your facility.

7. **Monthly Usage** – How much of the chemical formulation you used or consumed during the month. This may be based on actual consumption. Or, it may be calculated by adding your amount of inventory at the start of the month to your received (delivered) chemical formulations, and subtracting the amount of inventory you have at the end of the month.

Monthly usage (unit)	Do you have an MSDS/SDS?	Compliant with latest version of ZDHC MRSL?	Support document for ZDHC MRSL finding	Certifications	Expiry dates of certification
Eg: kg	Eg: Yes, GHS Compliant	Eg: Yes	Eg: GOTS certification	Eg: GOTS	Eg: GOTS: Dec 31, 2017

8. **Monthly Usage (Unit)** – unit of measure for the monthly usage of the chemical formulation.

9. **Do you have MSDS/SDS?** – Specify if you have a Material Safety Data Sheet (MSDS) or Safety Data Sheet (SDS) onsite at your facility for the chemical formulation. There is a drop-down menu to specify if it is compliant with local requirements or the Globally Harmonized System (GHS).

USE THE DROP DOWN TO SELECT:

Yes, GHS Compliant – Select this option if the MSDS/SDS for the chemical formulation follows the GHS requirements. The GHS is an international approach to hazard communication, providing agreed criteria for classification of chemical hazards, and a standardized approach to label elements and safety data sheets. The GHS SDS requires 16 sections with a specified sequence and minimum specified information. Need help determining if the product in question is GHS compliant? For more information regarding requirements for GHS compliancy follow this [link](#).

Yes, compliant with local requirements only (not GHS compliant) – Select this option if the MSDS/SDS for the chemical formulation conforms to local requirements, but not GHS.

Yes, not sure of compliance with GHS or local requirements – Select this option if you have an MSDS/SDS for the chemical formulation, but you are unsure whether it is compliant with local requirements or GHS.

No – Select this option if you don't have an MSDS/SDS for the chemical formulation.

10. **Compliant with latest version of ZDHC MRSL?** As of October 20th, 2017, ZDHC MRSL v1.1 is the current version of the ZDHC MRSL. For the most recent ZDHC MRSL, please check ZDHC's website at www.roadmaptozero.com.

USE THE DROP DOWN TO SELECT:

Yes – The chemical formulation does not contain any of the MRSL chemical substances above the limits in the ZDHC MRSL.

No – The chemical formulation does contain MRSL chemical substances above the limits in the ZDHC MRSL.

Not Sure – Not sure where or how to find this information about the product or whether this product conforms to the ZDHC MRSL.

11. **Support Document for ZDHC MRSL Finding** – Specify what document(s) you have to support the finding that this chemical formulation is in compliance with the ZDHC MRSL. Examples could be a certification, analytical test results, chemical formulator declaration, chemical formulator positive list, etc. For more information, navigate to [The ZDHC MRSL Conformance Guidance](#).

12. **Certifications** – Provide any certifications for the chemical formulation. A third-party certification is from an independent body confirming that the chemical formulation meets specific requirements. Examples may include Global Organic Textile Standard (GOTS), REACH, bluesign, Cradle2Cradle (C2C), OEKO-TEX ECO Passport.

13. **Expiry Dates of Certifications** – Please provide the dates of expiration of the certifications.

SHEET 2: CHEMICAL INGREDIENTS

Chemical formulation (English)	Chemical formulation (Local)	Chemical formulator (English)	Chemical formulator (Local)
Eg: NEVACRON 331-R	Eg: NEVACRON 331-R	Eg: DyStar Colours Distribution GmbH	Eg: DyStar Colours Distribution GmbH

1. **Chemical Formulation (English)** – The chemical product, ready for use.
2. **Chemical Formulation (local)** – The chemical product, read for use. In this column you can provide the name of the chemical formulation in the local language, if applicable.
3. **Chemical Formulator (English)** – Who produced the formulation.
4. **Chemical Formulator (Local)** – Who produced the formulation. In this column you can provide the name of the chemical formulator in the local language, if applicable.

Chemical ingredient name from MSDS/ SDS	Chemical ingredient CAS# from MSDS/ SDS	Chemical ingredient % from MSDS/SDS
Eg: Sodium hydroxide	Eg: 1310-73-2	Eg: 80%

5. **Chemical ingredient name from MSDS/SDS** – Navigate to Section 3 Composition/Information section in the MSDS/SDS and provide the names of the chemical ingredients in the chemical formulation.
6. **Chemical ingredient CAS# from MSDS/SDS** – Navigate to Section 3 Composition/Information section in the MSDS/SDS and provide the Chemical Abstracts Service (CAS) # for the ingredients in the chemical formulation.
7. **Chemical ingredient % from MSDS/SDS** – Navigate to Section 3 Composition/Information section in the MSDS/SDS and provide the percentages or percentage ranges of the chemical ingredients in the chemical formulation.

SHEET 3: CHEMICAL SUPPLIER CONTACTS

Chemical formulator (English)	Chemical formulator (Local)	Country	Website
Eg: Sun Lao	Eg: Sun Lao	Eg: China	Eg: www.sunloo.com

1. **Chemical Formulator (English)** – Who produced the formulation
2. **Chemical Formulator (Local)** – Who produced the formulation. In this column you can provide the name of the chemical formulator in the local language, if applicable.
3. **Country** – Provide the country in which the chemical formulator’s headquarters is located.
4. **Website** – Provide the website URL of the chemical formulator, if applicable.

Contact person	Telephone	Email	Comments
Eg: John Smith	Eg: 415-555-5555	Eg: john.sf@textiles.com	Eg: Main Contact for Sales

5. **Contact Person** – The main contact for the chemical formulator for chemical formulation related inquiries.
6. **Telephone** – The main contact’s telephone number for chemical formulation related inquiries.
7. **Email** – The main contact’s email address for chemical formulation related inquiries.
8. **Comments (Optional)** – Any additional comments related to the contact information for this chemical formulator.